

Oasis Places

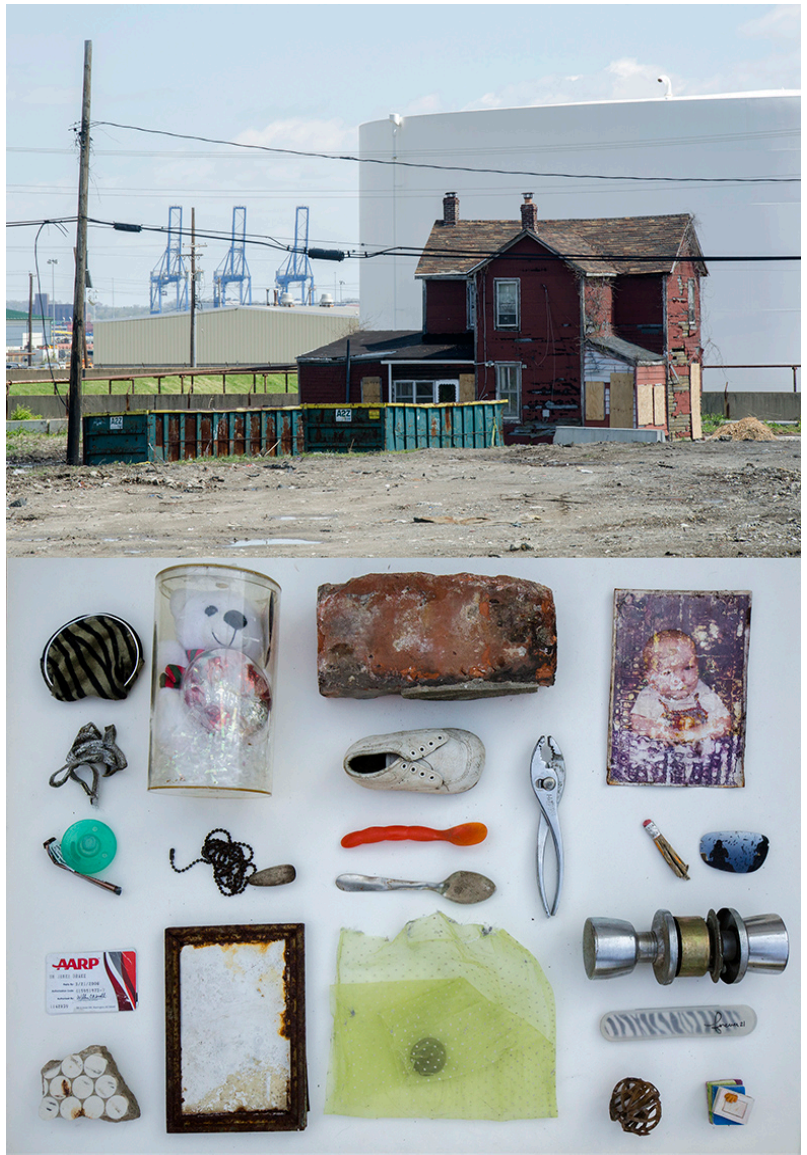
May 9 – June 22, 2013

Gallery Talk Thursday, May 9, 2013 6:00 pm, Reception 7:00 pm

Oasis Places centers around the unique ways in which a work of art can create a sense of place, whether through contemplative reflection, or interactive, viewer-participatory involvement. The “oasis” that each artist provides in their work creates a place where viewers can meet, discuss, and interact, or individually contemplate to fully activate each piece. *Oasis Places* builds upon the curators’ interests as an artist and curator concerned with the misinterpretation of mapped spaces by designing an exhibition around the ephemeral conditions that help to define what might be considered a place versus a space.

Artists: **Katherine Bennett, Stephen Bradley & Nicole King, K. David Fong, and Neal McDonald.**

MappingBaybrook.org statement: From community building to chemical dumping, the industrial urban landscape holds stories and artifacts of the wonders and the horrors of the history of the United States of America. “Mapping Baybrook” is a collaborative and interdisciplinary exploration of place that blends digital mapping technologies with research into the history and culture of an industrial community in Maryland referred to as Baybrook—a merging of the names of two neighborhoods Brooklyn and Curtis Bay. This community is a mix of diverse but connected neighborhoods located along the southeast coastline of Baltimore City. The Greater Baybrook area includes the past and present neighborhoods of Brooklyn, Curtis Bay, Fairfield, Hawkin’s Point, Masonville, and Wagner’s Point. A key objective of “Mapping Baybrook” is to document and preserve a sense of place and memory within this small harbor community cut off from downtown Baltimore by the Patapsco River. The project interprets the changes that have occurred in this overlooked but historic community throughout the arc of American industrialization.



URL to the Maryland Art Place exhibition; <http://www.mdartplace.org/>
Power Plant Live! 8 Market Place, Suite 100, Baltimore, Maryland 21202